

Using wool in government new builds and refurbbs

Procurement and design

Why wool?

Wool is a positive
for your project
and can be used
now.



Wellbeing	The combination of wool’s beneficial attributes in regulating temperature and moisture, reducing noise, neutralising indoor air pollutants, being naturally flame resistant and requiring fewer chemical treatments than other fibres means that wool is the fibre of choice to provide a more comfortable and safer work environment.
Fit for purpose	Wool is naturally durable, resilient and stain resistant. Wool product manufacturers have designed products specifically for commercial applications, with certification and warranties to support this. Custom design and colours can also be developed with manufacturers.
Naturally good	Wool is a naturally renewable fibre that is grown as part of a natural carbon cycle that produces as well as removes carbon from the environment.
Air quality	Indoor air pollutants can lead to discomfort, reduced productivity, and even ill health. Wool can significantly improve air quality by rapidly absorbing and neutralising common pollutants formaldehyde, sulphur dioxide and nitrogen oxides and does not re-emit them – even when heated.
Temperature and moisture control	Thermal regulation has been shown to be improved in spaces with wool. For example, wool carpet increases comfort levels for workers and saves on heating and cooling costs. Wool’s inherent ability to absorb and desorb large quantities of moisture vapour allows it to buffer changes in the relative humidity in a room.
Acoustic performance	The acoustic properties of wool surfaces control noise by reducing impact noise, absorbing airborne noise, and minimising the transmission of noise through floors into other rooms, ultimately making for a more pleasant working environment.
Fire safety	Wool is a safe option due to its natural fire resistance that comes from its unique composition. It requires higher levels of oxygen compared to other fibres to burn. Wool does not melt, drip, or stick to the skin when it burns, and it will self-extinguish in the absence of a heat source. This means wool produces less smoke and toxic gas than synthetic fibres.
Broader economic and social benefits	Selecting wool products from New Zealand results in economic benefits for our primary industries and rural communities that deliver improved economic and social outcomes for New Zealand

What is a 'wool product'?

Wool products are primarily made from natural woollen fibres - although some may include treatments or added materials for performance.

Where blends are needed, pairing wool with other natural fibres like hemp or biodegradable binders can preserve wool's benefits and support sustainable, circular end-of-life outcomes.



Where can we use wool?



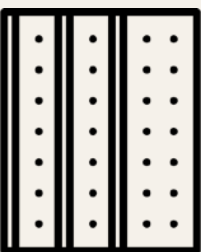
Flooring

- Carpet tiles
- Broadloom carpet
- Rugs



Insulation

- Batting
- Loose fill
- Intertenancy walls



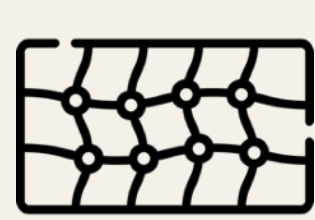
Acoustics

- Wall & ceiling panelling
- Coverings
- Dividers



Furnishings

- Seating upholstery, wadding & fill
- Cushion fabric & fill
- Curtaining
- Lighting
- Bedding



Geotextiles

- Matting

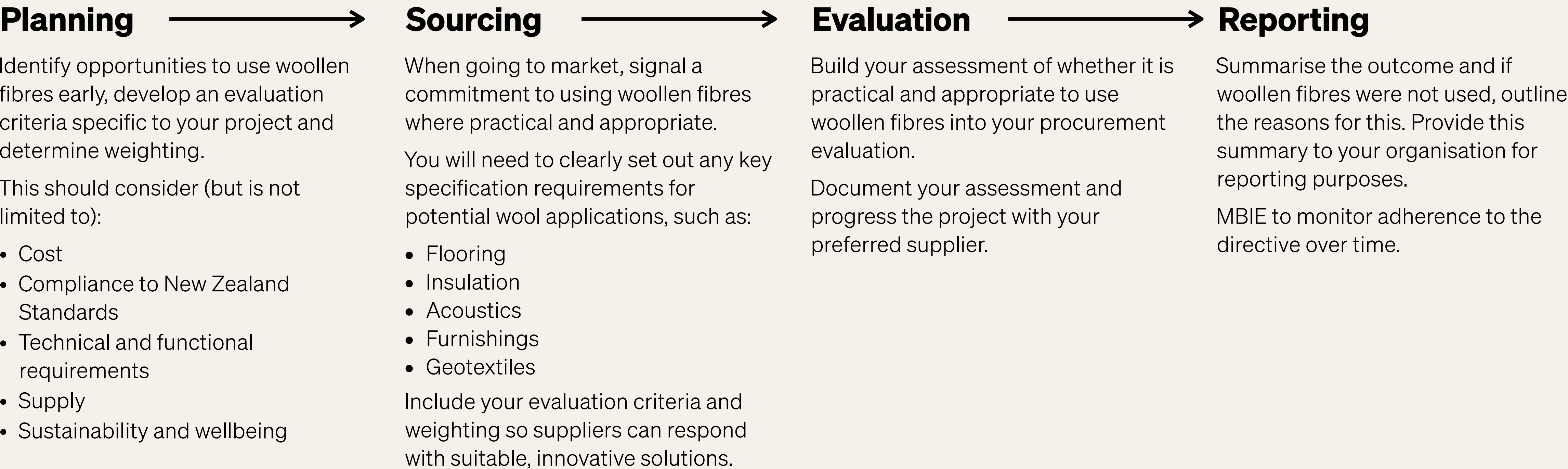


Apparel

- Uniforms

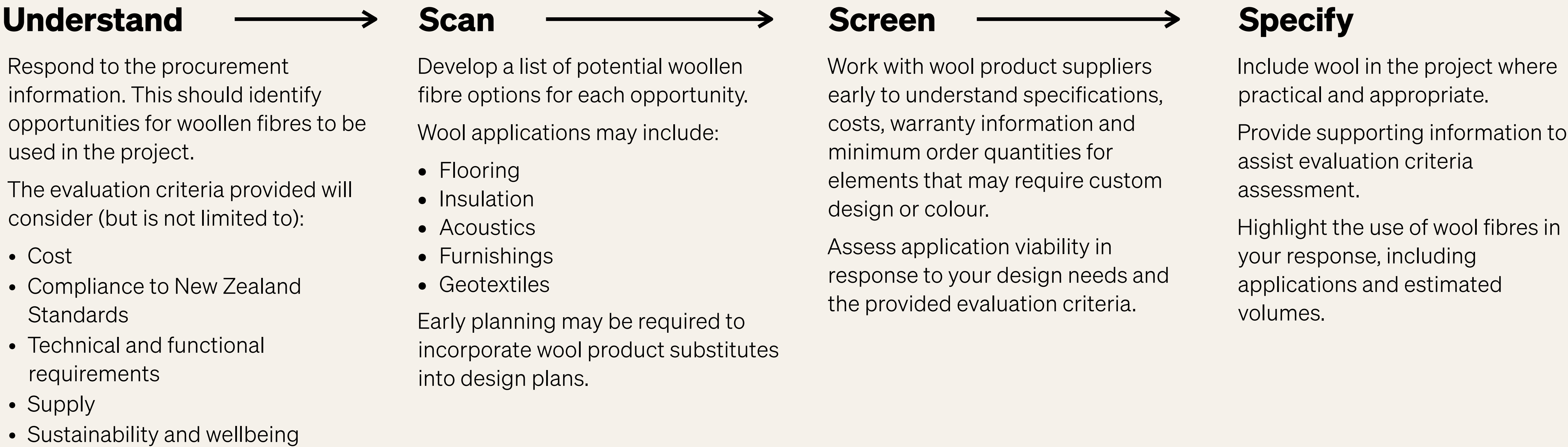
Incorporating wool into procurement

For government procurement and project teams



Incorporating wool into your design process

For architecture and design teams responding to government tenders

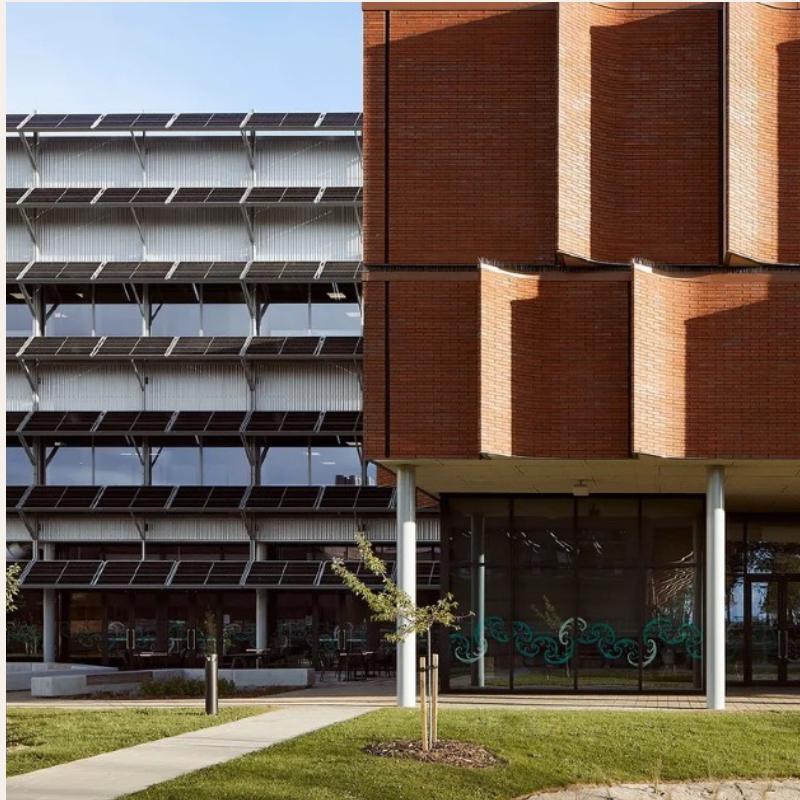


Wool for the win

- Make wool part of the design story.
- Wool products are high performing and are proven to be practical and appropriate in a broad range of building contexts. A growing range of innovative wool products are available.
- Early integration into design plans ensures wool can be used practically and appropriately.
- Collaborating with manufacturers can allow for custom colours and designs that align with project aesthetics.
- Using wool supports New Zealand wool growers, manufacturers and brands.

Discover

Where is wool being used today?



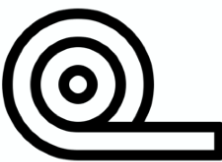
Case study 1



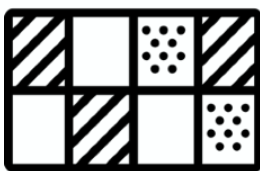
Waimarie, Lincoln University
Canterbury

New build, completed 2024
Warren and Mahoney

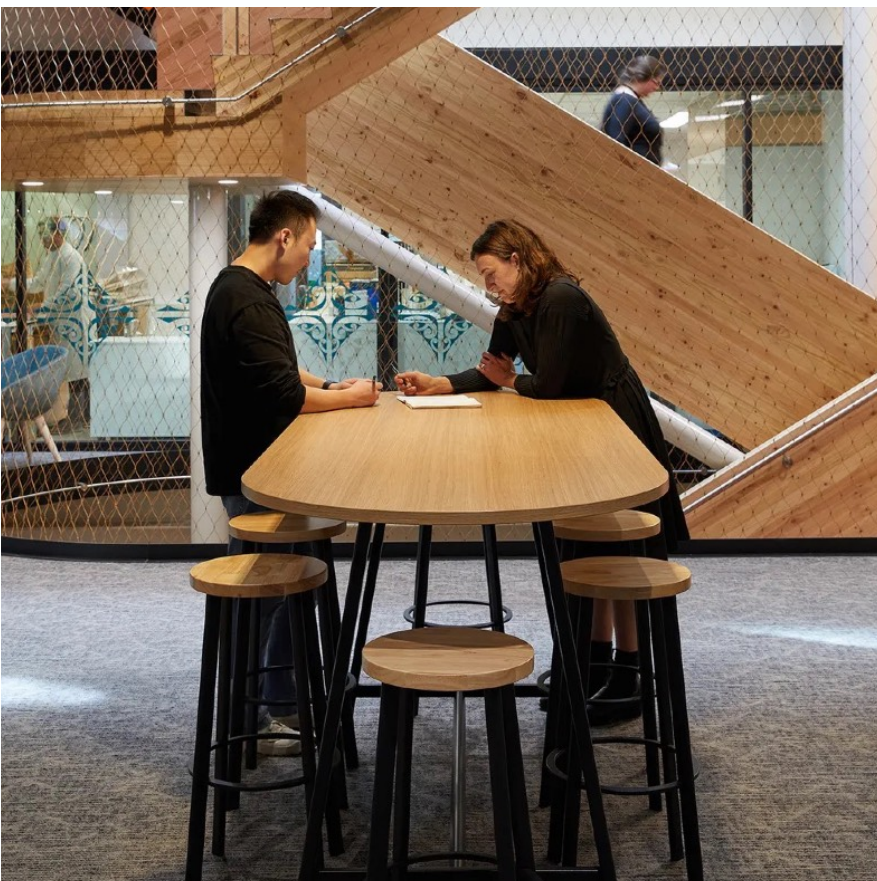
Wool use in project



Insulation by Terra Lana
Wool batting as thermal insulation.



Flooring by Wools of New Zealand
‘HASH’ and ‘CORE’ wool carpet tiles in Hollycombe.



Achievements

- World Architecture Festival - Higher Education & Research - Completed Projects – Winner, 2024
- Building Nations - Excellence in Innovation, 2024
- Te Kāhui Whaihanga New Zealand Institute of Architects Canterbury Architecture Award – Education, 2024
- INDE.Awards Asia Pacific - Education Category Winner, 2024
- NZ Commercial Project Awards ‘National Category winner – Education’ , 2024
- Property Council South Island People in Property Awards - Excellence in Sustainability Award, 2024
- Property Council NZ Awards - Education Property Award – Merit, 2024

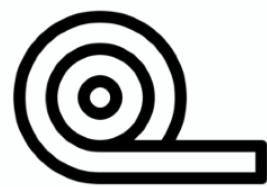
Case study 2



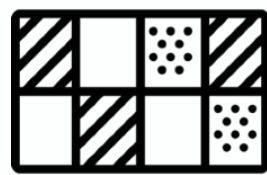
Tuhiraki, AgResearch
Canterbury

New build, completed 2024
[Architectus](#) and [Lab-works Architecture](#)

Wool use in project



Insulation by Terra Lana
Wool batting as thermal insulation.



Flooring by Godfrey Hirst
‘Natural Elevation’ wool carpet tiles in Corriedale Fleece and
Drysdale Fleece.

Achievements

- Te Kāhui Whaihanga NZIA
Canterbury Architecture
Award – Commercial 2024
- PCNZ Property Industry
Excellence Award – Education
and Sustainable Building
Property Award 2024



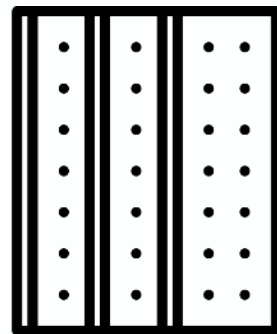
Case study 3



90 Devonport Road, Willis Bond
Tauranga

New build, completed 2025
Warren and Mahoney

Wool use in project



Acoustics by Autex
Embrace™ Uniform with custom screen cutout, in Clay.
Meeting rooms constructed using prefabricated,
standardised panels.

Achievements

- 6 Star Green Star rating



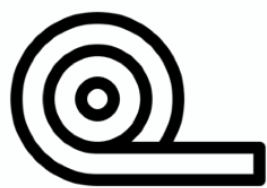
Case study 4



Ministerial Offices, New Zealand Parliament
Wellington

Refurbishment, 2025
[Studio Pacific Architecture](#)

Wool use in project



Insulation by Terra Lana
Wall Chatterblock insulation.



Acoustics by Floc
Wool roll ‘acoustic wallpaper’.



Flooring by Godfrey Hirst
‘Tundra Plains’ cut pile wool broadloom carpet in colourway ‘Kaikoura Plains’.



Flooring by Bremworth
‘Trojan Twist’ cut pile wool broadloom carpet in colourway ‘Remus’.



Case study 5



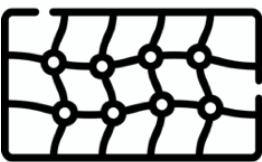
Native planting & ground stabilisation support

Canterbury

Civil construction and landscaping

Christchurch City Council

Wool use in project



Geotextiles by Terra Lana

DAGMAT geotextile matting applied in the following locations:

- **Canterbury Northern Corridor** to support native plantings along motorway banks by suppressing weeds and retaining moisture.
- **Sparks Road Reserve** to provide wetland erosion and sediment control through ground stabilisation and sediment filtration.
- **Quaifes Catchment Reserve** to support native tree planting in restored wetland area by suppressing weeds and soil run off.



Case study 6



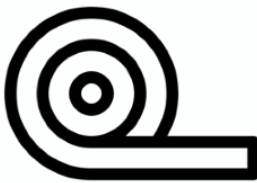
Ivey West Redevelopment, Lincoln University
Canterbury

Refurbishment, 2025
TEAM Architects

Wool use in project



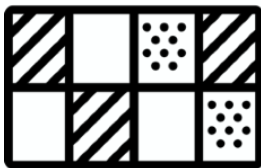
Acoustics by Floc
Wool roll ‘acoustic wallpaper’.
Custom print design by Kaitiaki
Studios.



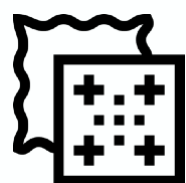
Insulation by Terra Lana
Wool batting as thermal
insulation



Flooring by Godfrey Hirst
Custom wool Axminster broadloom
carpet.



Flooring by Wools of NZ
‘Core and ‘Hash’ wool carpet tiles.



Furnishings by Europlan
Seating in Textilia Sumi and Synergy
wool upholstery fabric.



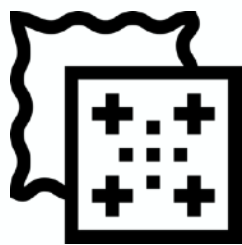
Case study 7



Performing Arts Centre, Diocesan School for Girls
Auckland

New build, completed 2020
[Upton Architects](#) and [McIlldowie Partners](#)

Wool use in project



Furnishings by Fletcher Design
‘Landscape V2’ modular seating featuring 100% NZ wool upholstery by Camera and Textilia.



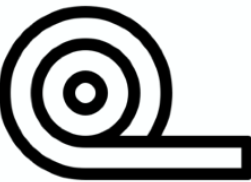
Case study 8



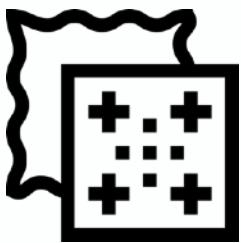
Living Pā, Te Herenga Waka Victoria University of Wellington
Wellington

New build, completed 2024
Tennent Brown Architects

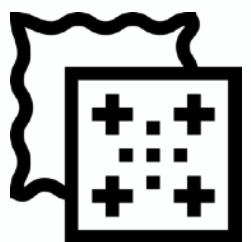
Wool use in project



Insulation by Terra Lana
Wool batting as thermal insulation.



Furnishings fill by Wise Wool
WISELAYER™ wool wadding.



Furnishings reupholstered in Maxwell Rogers Fabric
Upholstery fabric designs MANA (wool/flax/nylon) in Mangu, Pereki and Otaota colourways and SUPERFELT 100% wool in Heather and Napa colourways.



Directory

Connecting the dots between potential wool applications and product.

Check out the Specifier Directory to find the companies that supply a broad range of wool products for your next project.

[Specifier Directory](#)

WOOL IMPACT

Q

Search

[Find Wool](#)[Brands](#)[Discover](#)[Contact](#)

We solve problems with wool, for you, your brand, and your business.
If you're looking to get amongst the best natural fibre in the world,
we'll show you the way.

FEATURE

Wool Impact solves problems with wool.

Wool Impact is an all-encompassing advocacy and resource hub for inspiration and information

ADJACENT

TRANSFORMATIONAL

03072025V1.0

Support

Reach out to the Wool Impact team if you have any questions.

navigator@woolimpact.com